

# *LS1000 LS1300* **Linkage Sprayers**



**BERTOLINI**  
PUMPS & SPRAYERS

# BA's LS1000 & LS1300 Linkage Sprayer ...

The all new locally designed and manufactured LS Series Sprayers are the result of two years' of work from our Research and Development Team plus consultation with local farmers and contractors to ensure the new LS sprayer suits New Zealand's and Australia's demanding terrain whilst incorporating the latest Ag-Spraying technology.

LS Series' functional design ensures it is user-friendly while offering industry best practice and high levels of operator safety, increased filling efficiencies resulting in more productivity.

The LS Series Sprayer includes a number of new design features which have been rigorously field tested.

## **New frame design: built local, built strong**

The LS Series features a totally new hot dipped galvanised frame design, the strongest in its class RHS frame utilises the latest manufacturing techniques. BA's exclusive "Strong-Link" system ties the front of the frame to the rear, offering superior frame strength while transferring the boom weight to the front 3PTL linkage mounts.

## **New slim-line tank design:**

The LS slim-line 1000 and 1300 litre UV Rated Polyethylene tanks have been developed to move the weight closer to the tractor, offering improved operator comfort through superior weight distribution. The slim-line tank shape for excellent agitation via the Venturi agitator, easy decontamination with no areas for possible chemical build up and the ability to totally evacuate the tank contents.

## **New Standard features:**

- LS Series' slim-line design incorporates BA's new "Rota-Mix" chemical induction hopper, the exclusive design opens out of the main tank while ensuring all components are fully protected. Rota-Mix 30 will easily induct all liquids, mix powders and granular chemicals. Five and 20 litre containers are easily rinsed with the telescopic container rinsing nozzle.

- LS Series Sprayers have an easy to use operator control station, clearly marked, enabling operator to change from main spray tank to flush tank, spray to chemical induction with ease.

- LS Series Sprayers feature integrated 10 litre hand wash and 105 litre "Smart-Flush" tanks, allowing the operator to start decontamination in the field, reducing chemical residue at the fill/flush station.

## **Super X-2 boom**

To complement the new LS Series Sprayers Bertolini have focused heavily on associated product development. The new "Super X-2" 12 and 15 metre hydraulic fold boom features new centre section with revised self-levelling geometry, improved inner section pivots utilising bearings for longevity and new outer section auto-reloading breakaways that breakaway forward and aft. Revised airbag suspension improves boom ride while reducing boom setback by 150mm assisting in improved weight distribution

All LS Series Sprayers are fitted with the Bertolini POLY pump which is liquid fertiliser ready, with your choice of in-cab electric control or full auto rate controller with integrated GPS guidance and auto boom section control.

Your new LS Series Sprayer will become one of your most used farming tools, offering long life, fast returns and low cost of ownership.



**"Global Economy pressures have forced many manufacturers to venture offshore. Instead the team at Bertolini have resisted these pressures and focused on sourcing the very best quality components from New Zealand, the USA and Europe. We have streamlined our in-house research and development and manufacturing processes ensuring that Bertolini still offers the very best New Zealand made product, designed to suit our demanding conditions."**

**Mark Rendle  
Managing Director, Bertolini Australasia.**





Easy access hand wash tank.



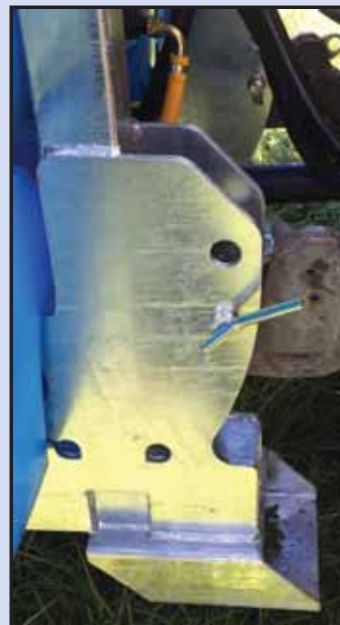
Smart Flush 105 litre on-board flush tank.



Rota-Mix 30, chemical induction hopper with container rinse function. Easy access controls at a safe working height.



BA control station for spray/flush tank selection or chemical induction and tank drain.



100 x 75 and 75 x 75 RHS chassie, HD double 3PTL plates, strongest in its class. Forklift sleeves. BA designed "Strong-Link" ties the front and rear frame together for superior strength.



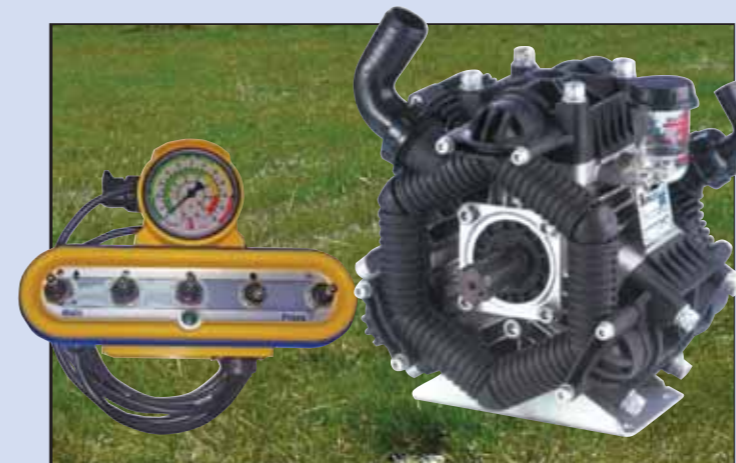
Large capacity main suction filter. Camlock capped main drain, bottom entry fill point.



Bold tank level sight tube, easily read from the operator's position.



BA's new 12 or 15 metre "Super X-2" spray boom with wing tip lift and full independent hydraulic fold.



Bertolini liquid fert ready POLY pump and electric incab control.



Dual sprayboom pressure filters, 80 and 100 mesh to eliminate individual nozzle strainers and blocked nozzles.



## “SUPER X-2” – Bertolini’s new generation hydraulic fold spray boom

Bertolini’s “SUPER X-2” fully hydraulic fold 12 and 15 metre spray booms have resulted from our Research and Development Team liaising with farmers and contractors who operate BA’s popular “Super X” spray boom.

“Super X-2” 12 and 15 metre spray booms feature a new centre section offering more strength with revised self-levelling geometry for smoother operation in the field, improved inner section pivots utilising bearings for longevity and new outer section auto-reloading breakaways that breakaway forward and aft. “Super X-2” has full nozzle protection as part of the design, not an afterthought. “Super X-2” has a formidable lineup of optional accessories, full wing lift, airbag boom suspension, verticle hydraulic lift and tri-jet nozzle bodies.

- Self-levelling centre section with optional hydraulic lock
- Deep centre section enables triangulated arm bracing to eliminate boom arm flex
- Main boom arm pivots utilise bearings for smooth operation
- Full nozzle protection in “Super X-2” boom
- Auto reloading break-away saves stopping to reset. Breaks away forward and aft








Optional hydraulic mast allows the operator to raise the boom 900mm.



Optional airbag suspension extends boom life.



Optional fenceline nozzle, adds 3 metres coverage.

STANDARD FEATURES	LS1000-2136-12X2	LS1300-2136-12X2	LS1000-2136-15X2	LS1300-2136-15X2	OPTIONAL UPGRADES
Galvanised 3PTL frame	✓	✓	✓	✓	
1000 litre main tank	✓		✓		
1300 litre main tank		✓		✓	
Smart-Flush 105 litre flush tank	✓	✓	✓	✓	
10 litre hand wash tank	✓	✓	✓	✓	
Venturi tank agitation	✓	✓	✓	✓	
Rota-Mix 30 Chemical Induction Hopper with container rinse nozzle	✓	✓	✓	✓	
Bertolini POLY2136 liquid fertiliser ready pump, 126 l.p.m. 15BAR	✓	✓	✓	✓	
Bertolini POLY2180 liquid fertiliser ready pump, 165 l.p.m. 15BAR	Optional	Optional	Optional	Optional	
Hydraulically driven pump	Optional	Optional	Optional	Optional	
Three section in-cab electric control with pressure gauge	✓	✓	✓	✓	
Autorate controller, 5, 7 or 9 section	Optional	Optional	Optional	Optional	
GPS Guidance	Optional	Optional	Optional	Optional	
Auto Boom Section Control	Optional	Optional	Optional	Optional	
Super X-2 hydraulic fold spray boom	12 metre	12 metre	15 metre	15 metre	
Super X-2 self-levelling centre section	✓	✓	✓	✓	
TeeJet® AIXR Nozzles	✓	✓	✓	✓	
Multiple nozzle bodies (3, 4 or 5 spray positions)	Optional	Optional	Optional	Optional	
Dual airbag boom suspension	Optional	Optional	Optional	Optional	
Hydraulic verticle boom lift, 1200mm stroke	Optional	Optional	Optional	Optional	
Dimensions L x W x H					
Weight	709kg	719kg	735kg	745kg	

# BERTOLINI PUMPS & SPRAYERS

32-36 Ellis Street, Hamilton, New Zealand.  
Phone: 07 847 7950. Fax: 07 847 7960.  
Website: [www.bertolini.co.nz](http://www.bertolini.co.nz)

AVAILABLE FROM: